

*Alexander* in lit. 27.V.1965  
= *P. (Dier.) piscatoguis* Al. 1941  
= *P. (Dier.) vabei* Nielsen 1951  
= *P. (Dier.) kamtschatica* (Pack) 1964

***Limonia (Dicranomyia) vabei* n. sp.  
from Grønland (Dipt. Tipul.).**

Report nr. 3 from the zootopographical investigation of Grønland.

By

Peder Nielsen (Silkeborg).

Through the kindness of Mr. Chr. Vibe M. A. I have had the pleasure to examine some nematoceros insects from Grønland. Among the material one of the species proved to be new to science. Below I give a description and in honour of the collector the species is named:

***Limonia (Dicranomyia) vabei* n. sp.**

General coloration dark brown, thorax dusted with bronze. Wings hyaline, stigma faint.

Head dark brown pruinose. Rostrum and the first segment of the palpi light yellowish-brown. Antennae black, first segment of scape of antennae may be dark brown. Flagellar segments shortly oval, with short verticils. Mesonotum dark brown, dusted with bronze. Praescutum with an indistinct dark median stripe. Scutellum dark brown, pruinose. Postnotum dark brown pruinose, somewhat shining at the hind border. Abdomen dark brown, somewhat shining and with white-yellowish hairs. Hypopygium

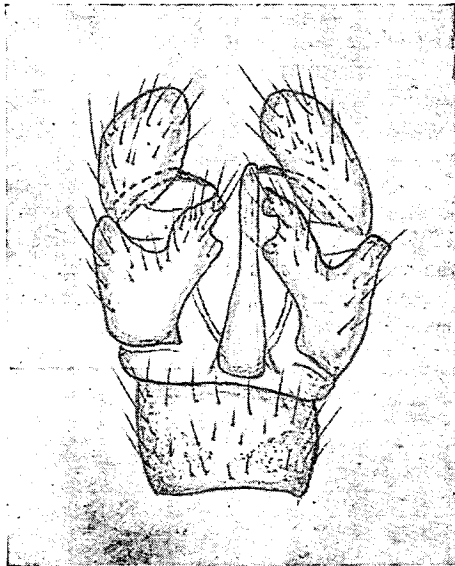


Fig. 1. Hypopygium of *Limonia (Dicranomyia) vabei* n. sp. ♂ ventrally.

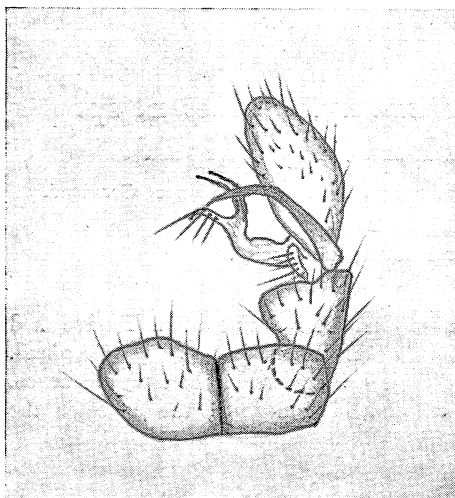


Fig. 2: Hypopygium of *Limonia (Dicranomyia) vibei* n. sp. ♂ dorsally.

small, light brown. Halteres black, only the basis is dark brown. Pleurae dark brown pruinose. Coxae light yellowish pruinose. Legs blackish-brown, femora dark brown at the basis. Wings hyaline, pterostigma very faint. The wing-veins light brown.  $Sc_1$  ends in  $C$  well before the origin of  $Rs$ , only in one specimen  $Sc_1$  ends just opposite the origin of  $Rs$ ;  $Sc_2$  removed far from the tip of  $Sc_1$ . Discal cell closed. The position of  $r-m$  varies somewhat, it can be

placed close to the fork of  $M$  and it can be placed about the half of its own length from the fork of  $M$ . Winglength 6-7 mm.

Hypopygium (fig. 1-2): ninth tergite only a little curved in the middle, basistyle short, dorsally with a little hairy enlargement; dorsal dististyle dark brown, long, pointed and weakly emarginate; ventral dististyle small.

5 ♂ (2 specimens dry preserved and 3 specimens preserved in alcohol) collected at Kapisigdlit, near  $64\frac{1}{2}^{\circ}$  n. lat. August 1st—12th 1950. The specimens were collected on the bank of a river, the vegetation was grass and *Salix*.

All the specimens are kept in the collection of Zoologisk Museum in København.