

# New exotic Tipulidae (Diptera)

**C P Alexander**

*Canadian Entomologist* 47:79-83 (1915) <http://biostor.org/reference/13792>

Keywords: *Dicranomyia*; *Dicranomyia fullowayi*; *Dicranomyia guttula*; Diptera; *Libnotes picta*; *Molophilus*; *Molophilus sirius*; *Mongoma*; *Mongoma guamensis*



Page images from the Biodiversity Heritage Library, <http://www.biodiversitylibrary.org/>, made available under a Creative Commons Attribution-Noncommercial License <http://creativecommons.org/licenses/by-nc/2.5/>

## NEW EXOTIC TIPULIDÆ (DIPTERA).

BY CHARLES P. ALEXANDER, ITHACA, N. Y.\*

The following species of crane-flies have been received from various correspondents during the past year.

Genus *Dicranomyia* Stephens.

1829. *Dicranomyia* Stephens; Cat. Brit. Ins., Vol. II, p. 243.

***Dicranomyia fullowayi*, sp. n. (Fig. 8).**

Small, body coloration brown; wings hyaline with grey spots; *Sc* short, ending opposite the origin of *Rs*.

*Male*.—Length 3.8 mm.; wing 4.8 mm.

Rostrum and palpi dark brown. Antennæ short, dark brown. Head brownish grey.

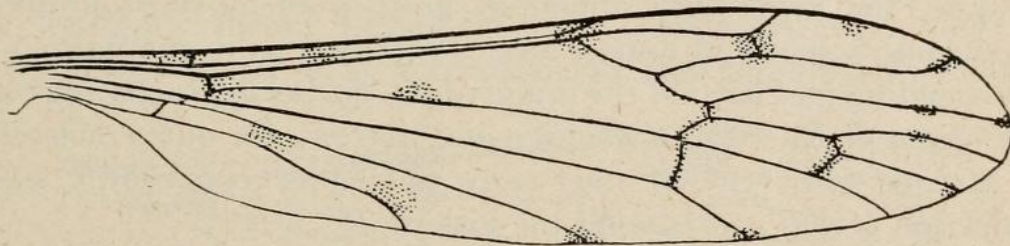


Fig. 8.—*Dicranomyia fullowayi*.

Thoracic dorsum brown without distinct stripes or markings of any kind; postnotum brownish grey. Pleuræ dark brownish black. Halteres light yellow. Legs with the coxæ and trochanters dull yellow; femora brown, paler at the base; tibiæ and tarsi brown. Wings hyaline or nearly so with grey spots as follows: At end of *Sc* and origin of *Rs* at end of *R*<sub>1</sub> and cross-vein *r*, along the cord and outer end of cell 1st *M*<sub>2</sub>, a blotch in the middle of cell 2nd *R*<sub>1</sub> near the costa, a large blotch on vein *R*<sub>4+5</sub> clouds at the ends of most of the veins, a blotch on *M* before the middle, a blotch at the arculus, two large spots in cell 1st *A* touching vein 2nd *A*. Venation as in figure—*Sc* short ending about opposite the origin of *Rs*, *Rs* half again as long as the deflection of *R*<sub>4+5</sub> cell 1st *M*<sub>2</sub> very long, basal deflection of *Cu*<sub>1</sub> just beyond the fork of *M*.

Abdomen dark brown, the last segment and the ovipositor more yellowish.

*Habitat*.—Island of Guam, Ladrões.

\*From the Department of Entomology, Cornell University.  
March, 1915

*Holotype*, ♂, Guam, Ladrones, D. T. Fulloway, coll. No. 1384.

**Dicranomyia guttula**, sp. n. (Fig. 9.)

Brown; wings hyaline with gray spots along the veins; *Sc* short ending opposite the origin of *Rs*.

*Female*.—Length 4.5—5 mm; wing, 5.7—6.4 mm.

Rostrum, palpi and antennæ dark brown. Head grey.

Thoracic præscutum rich yellowish brown with indications of darker markings behind; scutum similar with an indistinct darker spot on either lobe in front; postnotum light brown with a faint whitish bloom. Pleuræ brown, the dorsal sclerites, including those of the neck, around to the halteres, dark brown. Halteres light brown, the knob darker. Legs with the coxæ and trochanters yellow, femora dull yellow, tibiæ and tarsi light brown. Wings hyaline, the veins with abundant grey spots at short intervals producing a speckled appearance. Venation as in the figure—*Sc* short ending just beyond the origin of *Rs*, *Sc*<sub>2</sub> being exactly opposite the origin of *Rs*, cell *1st M*<sub>2</sub> long and narrow, the outer deflection of *M*<sub>3</sub> long and arcuated, over twice as long as cross-vein *m*, basal deflection of *Cu*<sub>1</sub> just beyond the fork of *M*.

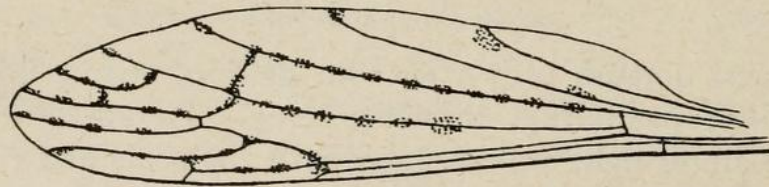


Fig. 9.—*Dicranomyia guttula*.

Abdominal tergites brown, tip of the abdomen, including ovipositor, yellowish; sternites yellowish.

*Habitat*.—Lor Marquez, South Africa.

*Holotype*, ♀, Lor Marquez, Africa, C. W. Howard, coll. No. 14.

*Paratype*, ♀, topotypic.

From *D. irrorata* Enderlein (Zool. Jahrb., vol. 32, pt. 1, p. 74, 75, fig. V<sub>1</sub>) this species differs in having *Sc* short and in having the spots on the wings confined to the veins.

Genus *Libnotes* Westwood.

1876. *Libnotes* Westwood; Trans. Ent. Soc. Lond., p. 505.

**Libnotes picta**, sp. n. (Fig. 10.)

Colour yellow, the thoracic dorsum with six rounded black

marks; wings hyaline with scanty brown spots including three along the costa; cross-vein *r* at the tip of *R*<sub>1</sub>.

*Male*.—Length about 6 mm.; wing, 7.1 mm.

Rostrum yellowish, the basal segments of the palpi light brown, the apical segments dark brown. Antennæ with the basal segment brown, the remainder of the antennæ dull yellow. Head brown with a thick light grey bloom.

Thoracic dorsum light yellow, the præscutum with four black marks, a pair on either side of the middle line about midlength of the sclerite, contiguous on their inner faces; a larger mark on the sides of the sclerite near the end of the suture; scutum with a very large rounded mark on each lobe; scutellum with the caudal margin narrowly brown; postnotum with two pale brown rounded markings behind, one on either side of the median line, but separated from one another. Pleuræ yellowish white. Halteres pale, knob a little darker. Legs with the coxæ and trochanters pale yellow,

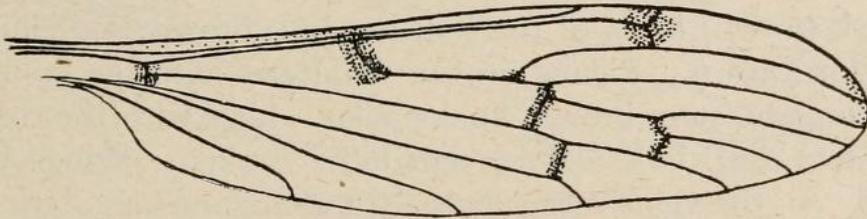


Fig. 10.—*Libnotes picta*.

femora light yellow, the tip narrowly dark brown; tibiæ dull yellow, the tip narrowly dark brown, tarsal segments 1 and 2 dull yellow, the tips narrowly darker, segments 3 to 5 brown. Wings hyaline with small brown marks as follows: a large rectangular blotch at the origin of *R*<sub>s</sub>, a rounded stigmal spot, narrow seams along the cord and along the outer end of cell 1st *M*<sub>2</sub>, the tip of the wing is narrowly infuscated, base of the wing in the vicinity of the arculus clouded with brown; veins yellow, brown inside the markings on the membrane. Venation as in figure.

Abdomen dull light yellow.

*Habitat*.—Island of Guam, Ladrões.

*Holotype*, ♂, Guam, Ladrões, D. T. Fulloway, coll. No. 1226.

By means of Osten Sacken's key to the species of this genus (Berl. Ent. Zeit., Vol. XXXI, pt. 2, p. 182, 183), *L. picta* would

run down to the first group of species, but runs out by its hyaline wings with spots. By de Meijere's key (Tijd. voor Ent., vol. 54, p. 33, 34) it would run down to *L. notata* Wulp, a much larger insect with entirely different body-coloration.

Genus *Molophilus* Curtis.

1833. *Molophilus* Curtis; Brit. Ent., p. 444.

***Molophilus sirius***, sp. n. (Fig. 11.)

Body coloration dark brown; hypopygium of the male with two pairs of chitinized appendages which are finely denticulate at the tip.

*Male*.—Length 3.5 mm.; wing, 5.4 mm.

*Female*.—Length 4.8 mm.; wing, 5.5 mm.

Rostrum and palpi dark brown. Antennæ broken. Head brownish grey, the occiput paler behind.

Pronotum and anterior margin of the mesonotal præscutum pale whitish yellow, remainder of the præscutum brown, the space before the pseudosutural foveæ yellow, the foveæ and tuberculate pits dark brown; lobes of the scutum dark brown; scutellum and postnotum brown. Pleuræ brown. Halteres with the knobs very large, elongate, stem brown, knobs paler. Legs with the coxæ and trochanters dull dark yellow, remainder broken. Wings hyaline or nearly so, the veins rather pale with abundant long dark brown hairs. Venation as in the figure.

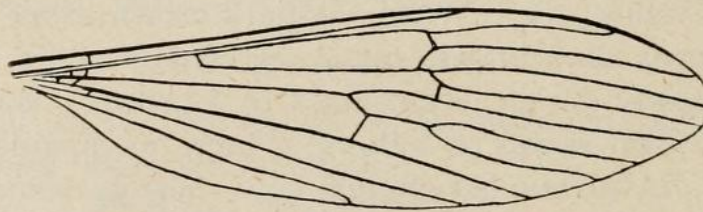


Fig. 11.—*Molophilus sirius*.

Abdomen dark brown, the valves of the ovipositor brownish yellow. Male hypopygium with the ventral-lying pleural appendages fleshy, long, slender and finger-like, clothed with long hairs; underneath these fleshy lobes are a pair of chitinized hooks, straight basally, curved ventrad and inward at their tips and on the under face with several small teeth. Dorsad of these are a pair of shorter chitinized appendages, almost straight, the dorsal face near the tip with minute teeth. Dorsal lobes, short, rounded at tip, flat,

clothed outwardly with long pale hairs, on the inner or ventral face with numerous black chitinized points.

*Habitat*.—Phillippine Islands.

*Holotype*, ♂, Phillippine Islands, July. Labelled "F. Casey, Wash. Thru Miss Ludlow."

*Allotype*, ♀, topotypic.

Genus *Mongoma* Westwood.

1881. *Mongoma* Westwood; Trans. Ent. Soc. Lond., p. 364.

***Mongoma guamensis*, sp. n.**

*Fragillima* group; colour dark brown; no white on the legs.

*Male*.—Length 6.8 mm.; wing, 7.1 mm.

Rostrum and palpi yellowish brown. Antennæ brownish yellow, the flagellar segments elongate, brown, clothed with abundant pale hairs. Head grey.

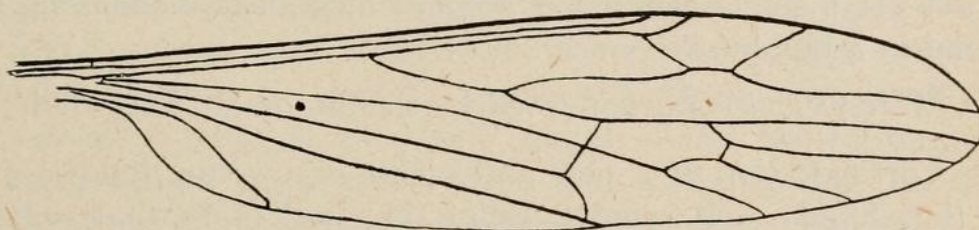


Fig. 12.—*Mongoma guamensis*.

Thoracic dorsum light brown, the pleuræ lighter coloured, more yellowish, especially ventrally. Halteres light brownish yellow, the knobs darker. Legs with the coxae and trochanters dull yellow, femora dark brown, paler at the base, tibiæ dark brown, tarsi much paler, almost yellow. Wings hyaline, the stigma indistinct; veins dark brown. Venation as in figure.

Abdominal tergites brownish grey; sternites more yellowish.

*Habitat*.—Island of Guam, Ladrones.

*Holotype*. ♂, Guam, Ladrones, D. T. Fulloway coll. No. 1385.

This species differs from all of the related regional species of the *fragillima* group by the lack of white on the legs, *pennipes* O.S., *tenera* O. S., and *pallidiventris* Brun. having the tarsi snowy-white. *M. cariniceps* End. from Sumatra is a very different insect from any of these species and is easily separated by its large size and orange colour. *M. albipennis* Meij. from Java is larger than *guamensis* and has the wings and veins whitish.